

Context Clues 1.3.1

Context clues are bits of information (clues) from the text that, when combined with prior knowledge (what you already know) allows you to decide the meaning of unknown words in the story or article you are reading.

Learning new words is an exciting challenge. If you're not sure what a word means, it helps if you can at least know the information around the word. There are ways of figuring out what a new or unusual word means. One way is to use context clues. Using context clues means using the information around the word you don't know. These words help you find what it means. You can also use the information in the rest of the paragraph to help you figure out what the word means. There are a few things to watch for when looking for context clues:

- Punctuation marks—a comma or dash may show you something about the unknown words. They can also give a clue to the new word's definition
- Key words, such as "or", and "that is" may also give you a hint that a definition is nearby.

Sometimes words are spelled alike, but have different meanings. Knowing about different types of words and their definitions is very important to reading and writing.

- For example, a bank can be a "place where money is stored," but a bank can also be an "area along the side of a river (river bank)."

Here are some specific context clues that you can look for when trying to figure out the meaning of an unfamiliar word:

1. **Definitions** - The definition of the word is sometimes restated in the context.
2. **Synonyms and Antonyms** -Sometimes a synonym (similar meaning) or antonym (opposite meaning) is given for the unfamiliar word.
3. **Examples** -Examples of the unknown word can sometimes help you decide its meaning
4. **Cause and Effect** -The unfamiliar word might be the cause of something or might be the result of a cause.
5. **Analogy** - You can sometimes puzzle out a new word by determining how it is related to other words in the context.

Context Clues Graphic Organizer

You are the detective....

Using a newspaper, magazine, textbook or literature story locate 4 words you do not know the meaning of and complete the graphic organizer. Write the mystery word in the word column. Write down the word or phrases from the sentence in the clue column and then write what you think the meaning of the word is in the meaning column.

Word	Clue(s)	Meaning

Word	Clue(s)	Meaning

Word	Clue(s)	Meaning

Word	Clue(s)	Meaning

NAME _____

Lawrence Virtual School

Context Clues 1.3.1

Meaning					
Don't know meaning					
Know something about the meaning					
Seen or heard the word, but not sure of the meaning					
Know meaning well and can use the word					

NAME _____

Lawrence Virtual School

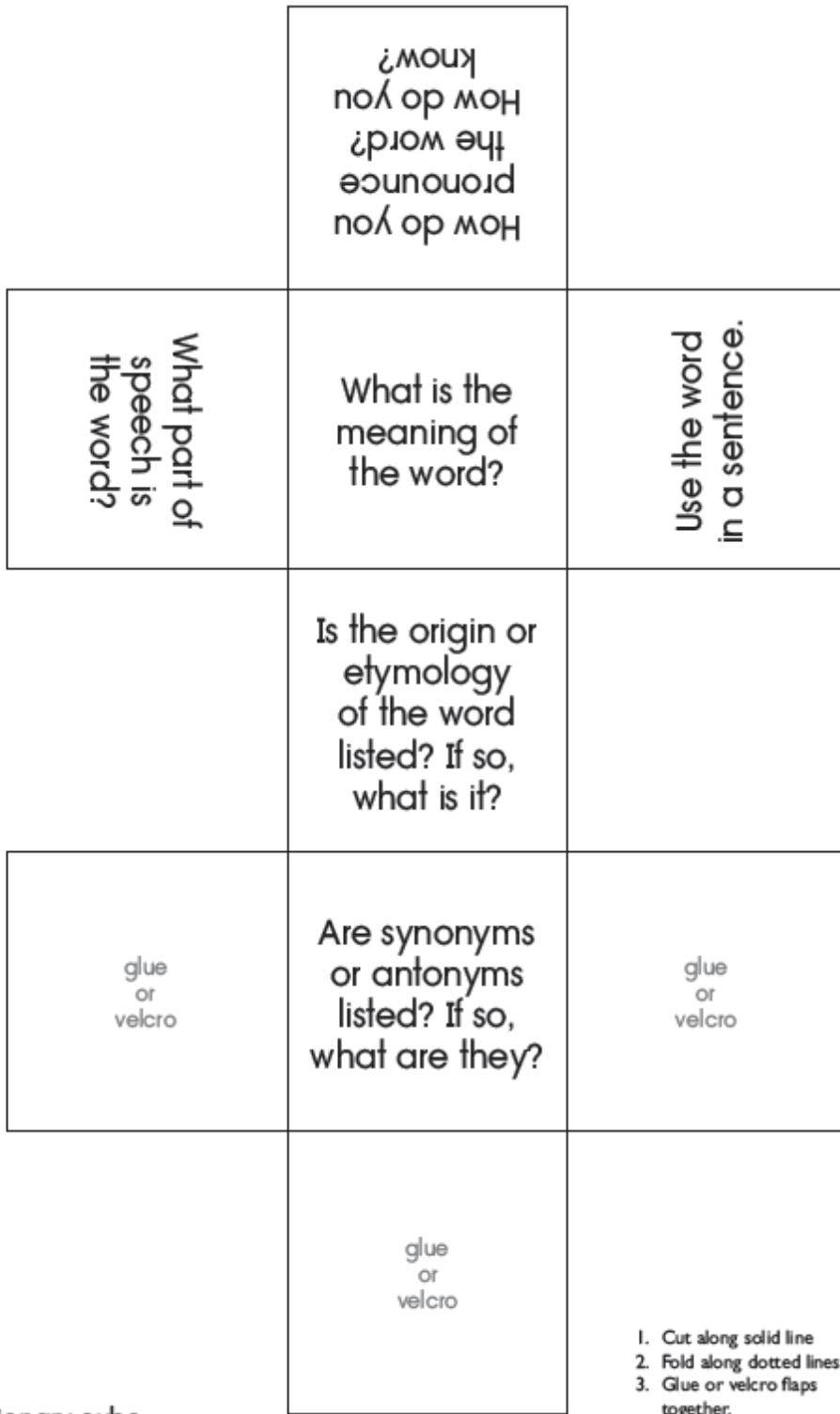
Context Clues 1.3.1

Word	Heard it (Put a check mark for each time you hear the word.)	Said it (Put a check mark for each time you say the word.)	Wrote it (Put a check mark for each time you write the word.)	Read it (Put a check mark for each time you read the word.)	Examples of where and how

NAME _____

Context Clues 1.3.1

Dictionary Cube

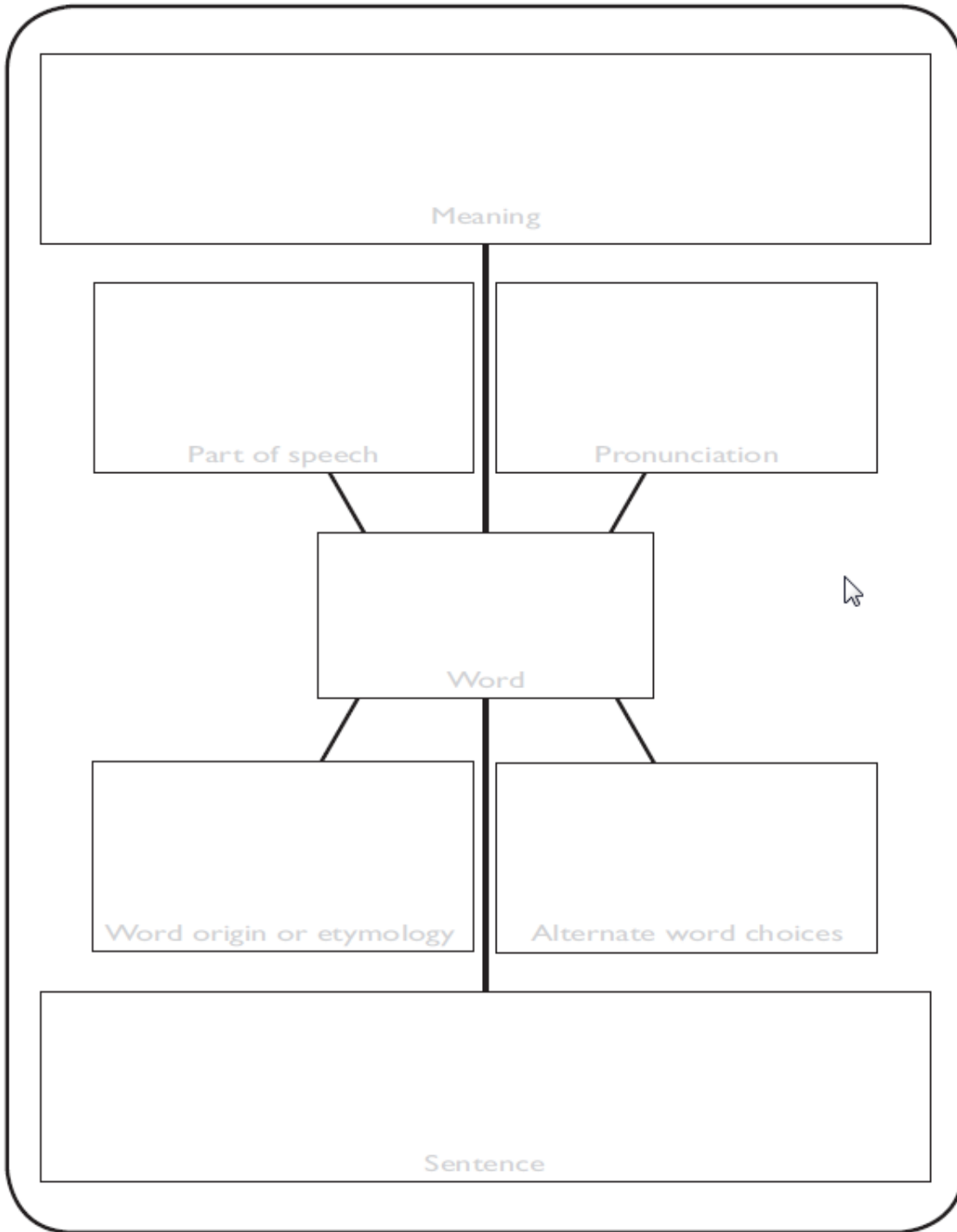


dictionary cube

NAME _____

Context Clues 1.3.1

Dictionary Dig



NAME _____

Context Clues 1.3.1

Dictionary Dig

Word: _____

Meaning: _____

Synonyms: _____

Sentence: _____

Other information: _____

Word: _____

Meaning: _____

Synonyms: _____

Sentence: _____

Other information: _____

Word: _____

Meaning: _____

Synonyms: _____

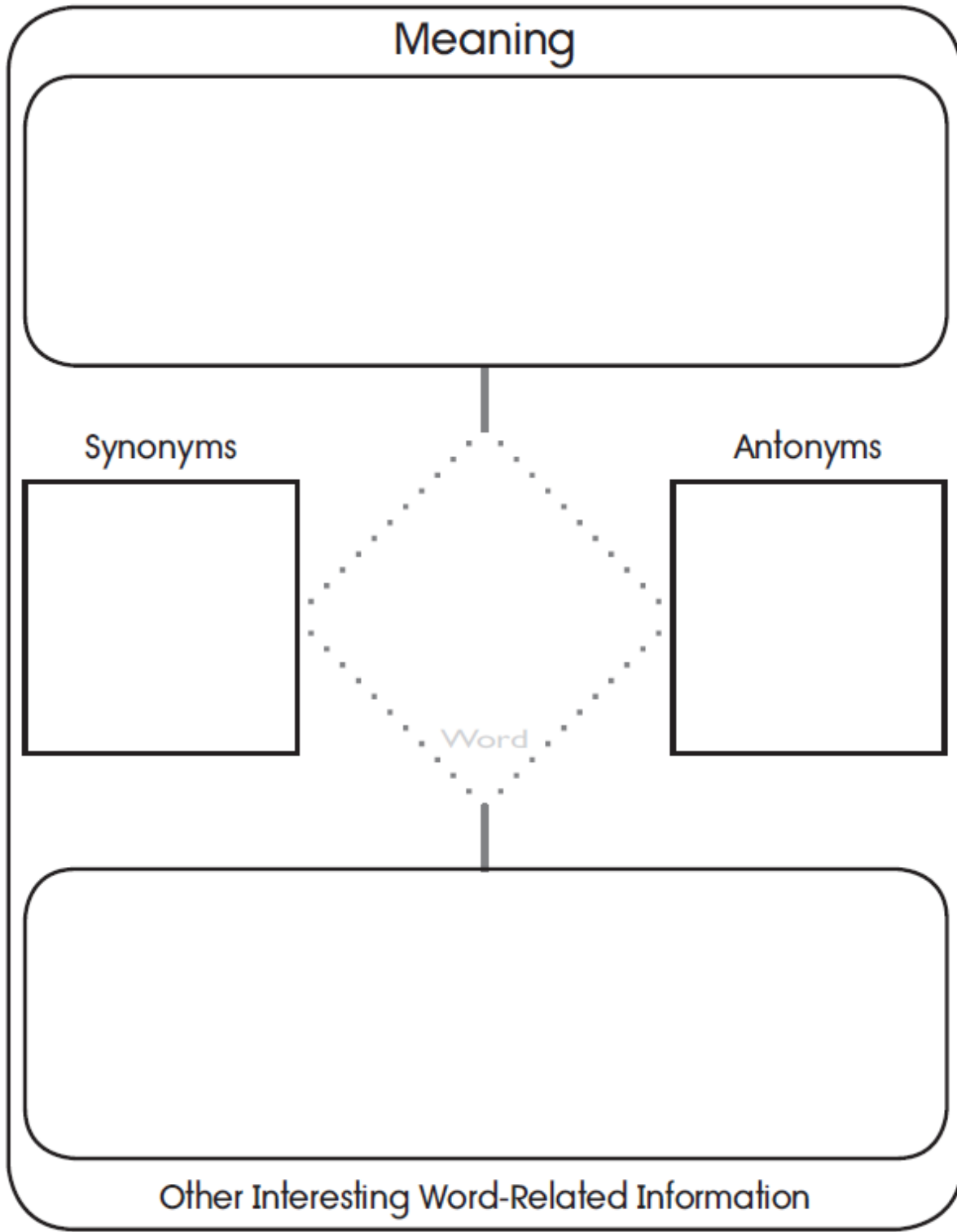
Sentence: _____

Other information: _____

NAME _____

Context Clues 1.3.1

Dictionary Dig



Context Clues 1.3.1

Word Clues #1

<p>Word: _____</p> <p>It means _____</p> <p>_____</p> <p>A synonym is _____</p> <p>There are ____ syllables.</p> <p>Something special about this word: _____</p> <p>_____</p> <p>_____</p>	<p>Word: _____</p> <p>It means _____</p> <p>_____</p> <p>You would use this word when _____</p> <p>_____</p> <p>There are ____ consonants.</p> <p>Something special about this word: _____</p> <p>_____</p> <p>_____</p>
<p>Word: _____</p> <p>It means _____</p> <p>_____</p> <p>It could be used to _____</p> <p>_____</p> <p>This word begins with _____</p> <p>Something special about this word: _____</p> <p>_____</p> <p>_____</p>	<p>Word: _____</p> <p>It means _____</p> <p>_____</p> <p>This is a _____ (part of speech)</p> <p>There are ____ syllables.</p> <p>Something special about this word: _____</p> <p>_____</p> <p>_____</p>

NAME _____

Lawrence Virtual School

Context Clues 1.3.1

Word Clues #2

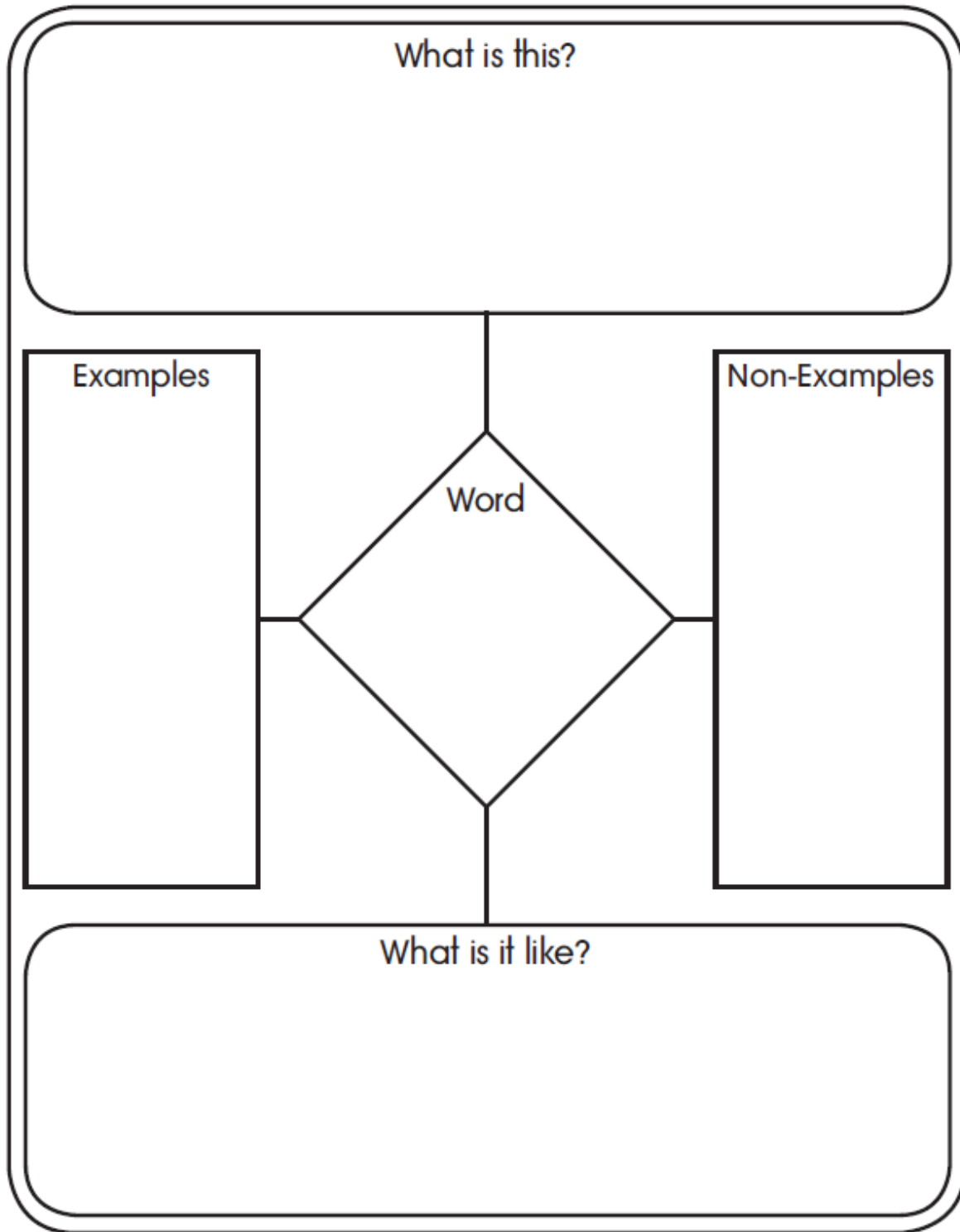
<p>Word: _____</p> <p>It means _____</p> <p>_____</p> <p>It could be used to _____</p> <p>_____</p> <p>It has a _____ (prefix, suffix, both, neither)</p> <p>Something special about this word: _____</p> <p>_____</p>	<p>Word: _____</p> <p>It means _____</p> <p>_____</p> <p>An antonym is _____</p> <p>It has a _____ (prefix, suffix, both, neither)</p> <p>Something special about this word: _____</p> <p>_____</p> <p>_____</p>
<p>Word: _____</p> <p>It means _____</p> <p>_____</p> <p>A synonym is _____</p> <p>There are _____ vowels.</p> <p>Something special about this word: _____</p> <p>_____</p> <p>_____</p>	<p>Word: _____</p> <p>It means _____</p> <p>_____</p> <p>An antonym is _____</p> <p>This word ends with _____</p> <p>Something special about this word: _____</p> <p>_____</p> <p>_____</p>

NAME _____

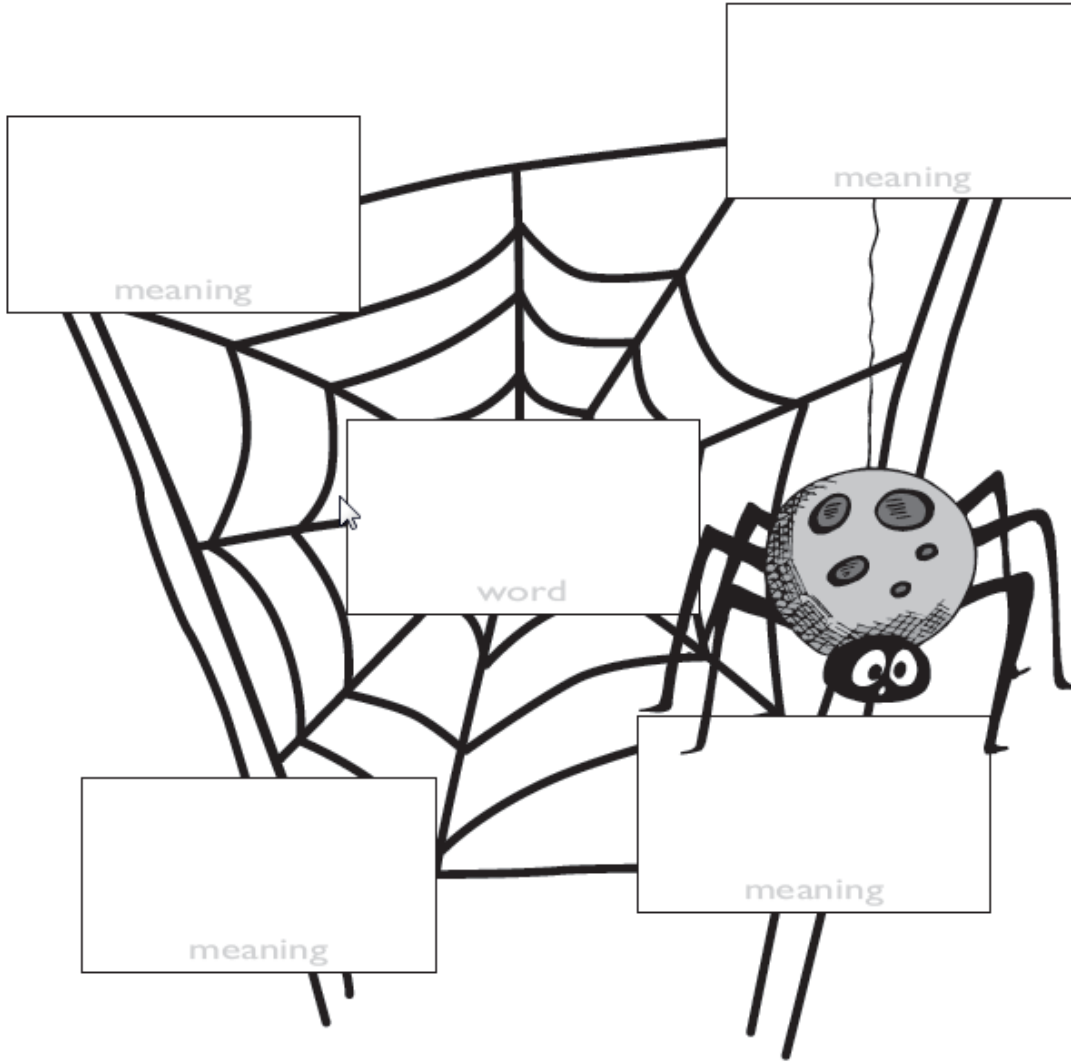
Context Clues 1.3.1

Word Clues #3

<p>Word: _____</p> <p>Pronunciation: _____</p> <p>Part of speech: _____</p> <p>Origin or etymology: _____</p> <p>_____</p> <p>Alternate word choices:</p> <p>_____</p> <p>_____</p> <p>_____</p>	<p>Word: _____</p> <p>Pronunciation: _____</p> <p>Part of speech: _____</p> <p>Origin or etymology: _____</p> <p>_____</p> <p>Alternate word choices:</p> <p>_____</p> <p>_____</p> <p>_____</p>
<p>Word: _____</p> <p>Pronunciation: _____</p> <p>Part of speech: _____</p> <p>Origin or etymology: _____</p> <p>_____</p> <p>Alternate word choices:</p> <p>_____</p> <p>_____</p> <p>_____</p>	<p>Word: _____</p> <p>Pronunciation: _____</p> <p>Part of speech: _____</p> <p>Origin or etymology: _____</p> <p>_____</p> <p>Alternate word choices:</p> <p>_____</p> <p>_____</p> <p>_____</p>



Context Clues 1.3.1



Context Clues 1.3.1

